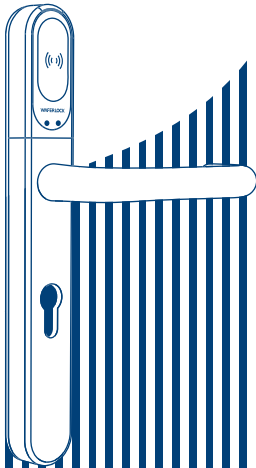


WAFERLOCK
Security × Simplicity

L700 ELECTRONIC HANDLE LOCK

User Manual



www.waferlock.com

Your Warranty

Your Warranty covers all manufacturers' defects in workmanship and material. It does not cover any unit that is damaged beyond normal usage, by improper installations, by contacts to chemicals, or any other acts or omissions un-sanctioned within the user manual. All components are covered for one (1) year after the date of purchase or installation from supplier.

The user is required to provide dated proof of purchase. Waferlock or its authorized distributor will determine if there is a warrantable condition associated with material and/or manufacturing workmanship.

If the lock conforms to the warranty conditions, the lock will be repaired free of charge. The shipping freights would be at owner's expense.

The warranty does not include any further obligation whatsoever, including but not limited to the installation of the replacement unit to the customer's lock.

All other warranties, express or implied, are disclaimed. All collateral agreements, which purport to modify this limited warranty, are of no effect.

CE Marking

This device has been tested to and conforms to the regulatory requirements of the European Union and has attained CE Marking. The CE Mark is a conformity marking consisting of the letters "CE". The CE Mark applies to products regulated by certain European health, safety and environmental protection legislation. The CE Mark is obligatory for products it applies to: the manufacturer affixes the marking in order to be allowed to sell his product in the European market.

This product conforms to the essential requirements of the R&TTE directive 1999/5/EC in order to attain CE Marking.

The CE Marking is not a quality mark. Foremost, it refers to the safety rather than to the quality of a product. Secondly, CE Marking is mandatory for the product it applies to, whereas most quality markings are voluntary.

WAFERLOCK CORPORATION

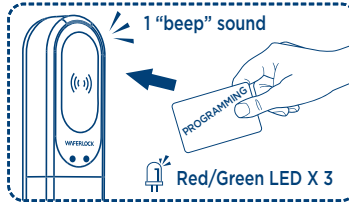
Tel: 886-4-24620208 Fax: 886-4-24636286

No. 16 Ke Yuan 2nd Rd., Central Taiwan Science Park
Taichung city 407, Taiwan.

E-mail: info@waferlock.com

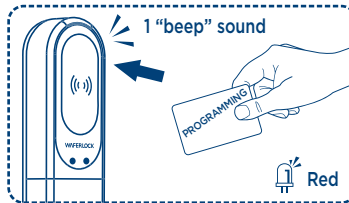
Default

Before setting the programming card, it is allowed to use any cards/badges to unlock the door, then you will hear 1 beep followed by red and green lights alternately flashing 3 times.

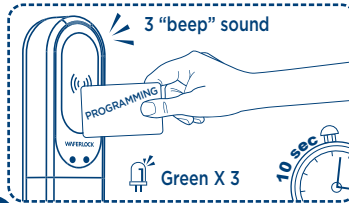


Set Programming Card

1 Approach the reader with programming card, you will hear 1 beep, and the red light starts flashing.



2 Tap the card on the reader for 10 seconds, you will hear 3 beeps followed by the green light flashing 3 times. The programming card is successfully set.

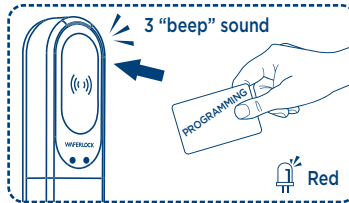


Note

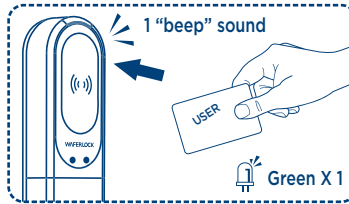
1. If the card did not approach for 10 seconds, you will hear 2 beeps followed by the red light flashing 2 times.
2. Programming card can be used for adding/deleting user cards/badges, but cannot be used to unlock the door.
3. Only 1 lock can be set by 1 programming card, hence, the programming card is far more important for users.

Program New User Card

1 Approach the reader with programming card, you will hear 3 beeps, and the red light starts flashing.



2 Approach the reader with card/badge, you will hear 1 beep followed by the green light flashing 1 time. The new user card/badge is programmed.

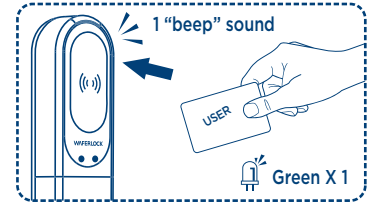


Note

1. After tapping the programming card on the reader, if you do not swipe the user card/ badge on the reader within 10 seconds, the programming mode will be cancelled.
2. The maximum of 250 user cards/badges can be programmed. By reaching the maximum limit, you can hear 10 short beeps followed by red and green lights alternately flashing 3 times.

Unlock The Door With User Card

1 Approach the reader with programed user card/badge, you will hear 1 beep followed by green light flashing 1 time, then the door is unlocked.

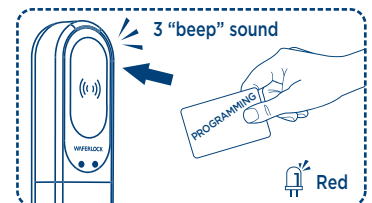


Note

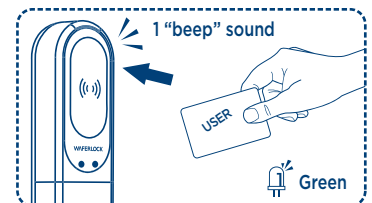
If you hear 2 beeps followed by the red light flashing 2 time, it means the card/badge is invalid.

Delete Individual User Card

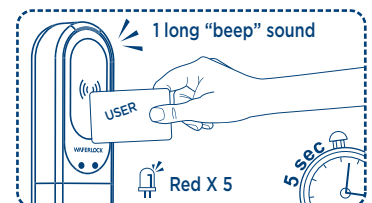
1 Approach the reader with programming card, you will hear 3 beeps, then remove the programming card, and the red light starts flashing.



2 Approach the reader with individual user card/badge, you will hear 1 beep followed by the green light flashing.



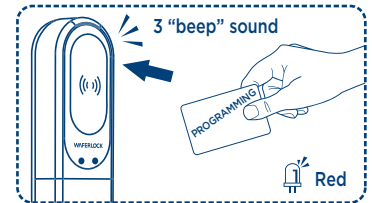
3 Tap the card/badge on the reader for 5 seconds, you will hear 1 long beep followed by the red light flashing 5 times. The individual user card has been deleted.



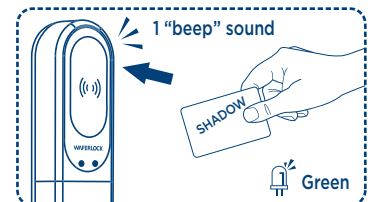
Delete Lost User Card

(Shadow Version Only)

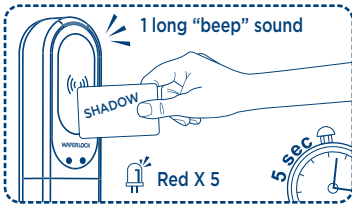
1 Approach the reader with programming card, you will hear 3 beeps, then remove the programming card, and the red light starts flashing.



2 Approach the reader with shadow card, which used to be paired by shadow user card, you will hear 1 beep and the green light starts flashing.



- Tap the card/badge on the reader for 5 seconds, you will hear 1 long beep followed by the red light flashing 5 times. The individual user card has been deleted.

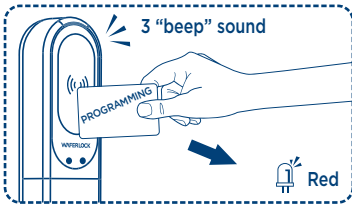


Note

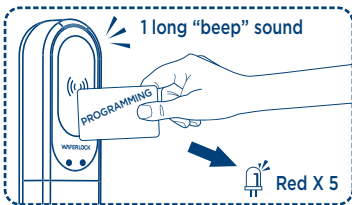
- The lost user card, which must originally be paired by shadow card, is allow to be deleted.
- Both User Card (Shadow Version) and Shadow Card are only available from WAFERLOCK or its distributors.

Delete All User Cards

- Approach the reader with programming card, you will hear 3 beeps, then remove the card, and the red light starts flashing.
- Tap the programming card on the reader again, you will hear 3 beeps, then remove the card again and the red light keeps flashing.

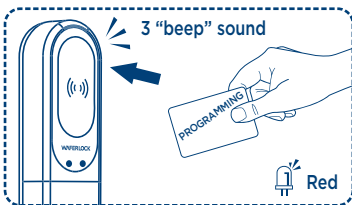


- Tap the programming card on the reader for the third time, you will hear 1 long beep followed by the red light flashing 5 times. All user cards have been deleted.

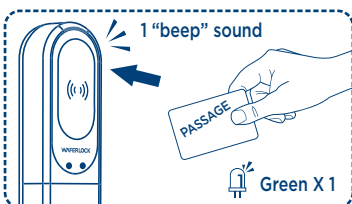


Set Passage Card

- Approach the reader with programming card, you will hear 3 beeps and the red light starts flashing.



- Approach the reader with passage card, you will hear 1 beep followed by the green light flashing 1 time. The passage card has been set.

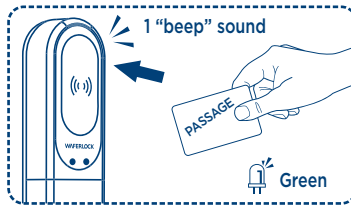


Note

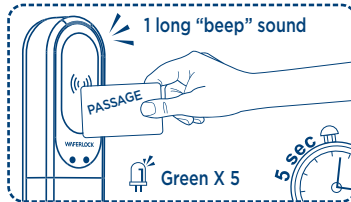
- Passage card cannot be deleted; it can only be reset.
- Only 1 passage card can be set on 1 lock.
- Passage card is only available from WAFERLOCK or its distributors.

Set User Card As Passage Mode

- Approach the reader with passage card, you will hear 1 beep followed by the green light flashing.

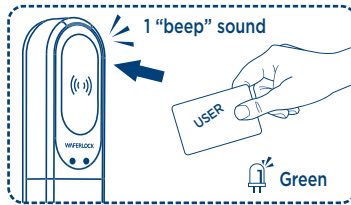


- Tap the user card on the reader for 5 seconds, you will hear 1 long beep followed by the green light flashing 5 times. The user card has been set as passage mode.

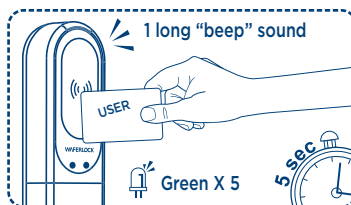


Set The Lock As Passage Mode

- Approach the reader with user card, which used to be set as passage mode, you will hear 1 beep followed by the green light flashing.

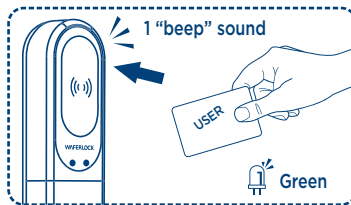


- Tap the passage card on the reader for 5 seconds, you will hear 1 long beep followed by the green light flashing 5 times. The lock has been set as passage mode.

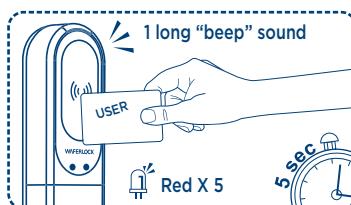


Set The Lock As Standard Mode

- Approach the reader with user card, which used to be set as passage mode, you will hear 1 beep followed by green light flashing.

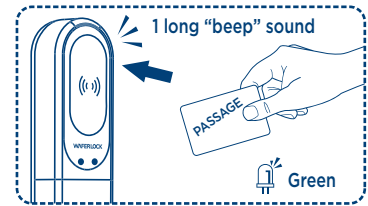


- Tap the card on the reader for 5 seconds, you will hear 1 long beep followed by red light flashing 5 times. The lock has been set as standard mode.

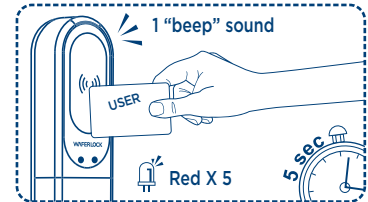


Set User Card As Standard Mode

- Approach the reader with passage card, you will hear 1 beep and the green light starts flashing.

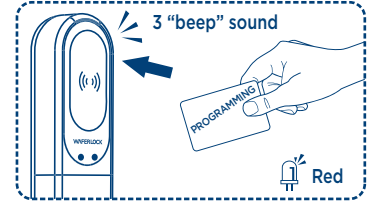


- Tap the user card on the reader for 5 seconds, you will hear 1 long beep followed by the red light flashing 5 times. The user card has been set as standard mode.

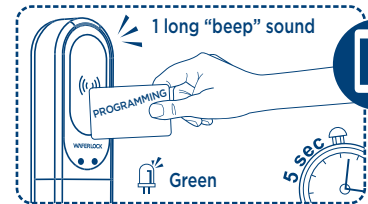


Set WAFERKEY (Optional)

- Approach the reader with programming card, you will hear 3 beeps, and the red light start flashing



- Tap the card on the reader for 5 seconds, you will hear 1 long beep and the green light starts flashing. The lock has been set as mobile paired mode, then please follow the instruction of the APP to finish the setup.



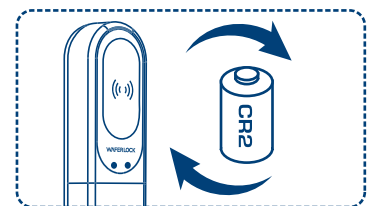
- If the lock did not successfully pair with mobile phone within 30 seconds, the mobile paired mode will be cancelled.

Note

Please download WAFERKEY APP on iOS Apple Store or Android Google Play Store.

Low Power Warning

If the lock battery is low, there is an acoustic warning for the user with 3 short beeps 5 times, followed by orange light flashing. Please replace a new battery to keep lock operating well.



Emergency External Power Supply

